

# ALLA FRANCE Precision Alcoholmeters

## Alcoolmetre de precizie

ALLA FRANCE Precision Alcoholmeters according to OIML ISO 4801

Ethanol by % Vol - Calibration temperature 20°C (68°F) - Individual number on the scale

On request, they can be supplied with a 3 point Traceable Calibration Certificate\*



Ref	Range % Vol	Div % Vol	Accuracy	mm
091.000 FCP	0-10	0.1	0.1	350
091.010 FCP	10-20	0.1	0.1	350
091.020 FCP	20-30	0.1	0.1	350
091.030 FCP	30-40	0.1	0.1	350
091.040 FCP	40-50	0.1	0.1	350
091.050 FCP	50-60	0.1	0.1	350
091.060 FCP	60-70	0.1	0.1	350
091.070 FCP	70-80	0.1	0.1	350
091.080 FCP	80-90	0.1	0.1	350
091.090 FCP	90-100	0.1	0.1	350

Ref	Range % Vol	Div % Vol	Accuracy	mm
091.005 FCP	5-15	0.1	0.1	350
091.006 FCP	6-16	0.1	0.1	350
091.009 FCP	9-16	0.1	0.1	350
091.011 FCP	11-18	0.1	0.1	350
091.015 FCP	15-22	0.1	0.1	350
091.025 FCP	25-35	0.1	0.1	350
091.035 FCP	35-45	0.1	0.1	350
091.045 FCP	45-55	0.1	0.1	350
091.055 FCP	55-65	0.1	0.1	350
091.065 FCP	65-75	0.1	0.1	350
091.075 FCP	75-85	0.1	0.1	350
091.085 FCP	85-95	0.1	0.1	350
091.095 FCP	95-103	0.1	0.1	350

Multi-Lab Romania  
Tel.+4 021 312 7144  
Fax.+4 021 323 3331  
www.multilab.ro | www.labshop.ro



## Range finder Alcoholmeters



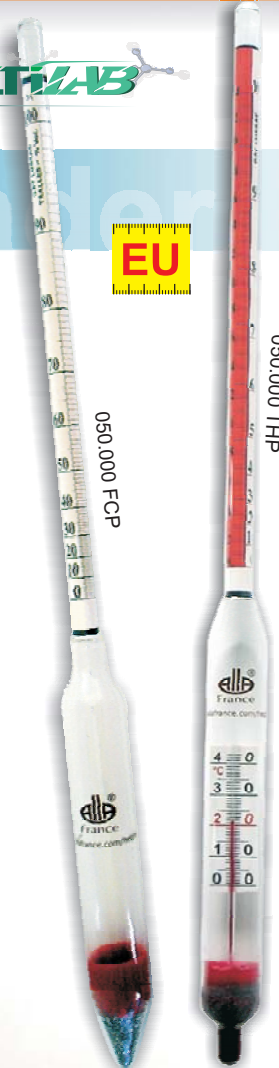
On request, they can be supplied with a 3 point Traceable Calibration

Calibration temperature 20°C (68°F)

Ref	Range	Scale	Div	Accuracy	mm
050.000 FCP	0-100	% Vol/GL/Tralles	1	1	360
	10-44	Cartier	0.5	0.5	
056.000 FCP	0-100	Tralles / Richter	1	1	360
053.000 FCP	0-35	% Vol	0.5	0.5	320
053.035 FCP	35-70	% Vol	0.5	0.5	320
053.070 FCP	70-100	% Vol	0.5	0.5	320

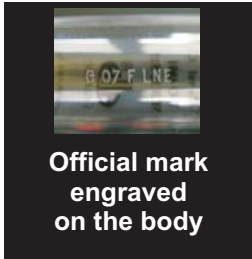
With thermometer in the body 0+40°C - div: 0.1°C - Red liquid filled

Ref	Range	Scale	Div	Accuracy	mm
050.000 THP	0-100	% Vol/GL/Tralles	1	1	370
	10-44	Cartier	0.5	0.5	
056.000 THP	0-100	Tralles / Richter	1	1	370
053.000 THP	0-35	% Vol	0.5	0.5	335
053.035 THP	35-70	% Vol	0.5	0.5	335
053.070 THP	70-100	% Vol	0.5	0.5	335



# Alcoholmeters according to European Standards

## Alcoolmetre conform stand. EU



Official mark engraved on the body

ALLA FRANCE Alcoholmeters according to OIML ISO 4801 - NF B 35-515

With OFFICIAL CONTROL Standard

Ethanol by % Vol. Calibration temperature 20°C .  
With an official mark engraved on the body, and an individual number on the scale.

Systematically delivered with an Official Verification LNE

On request available with a 3 point Traceable

Ref	Range % Vol	Div % Vol	Accuracy	mm
090.000 ETO1	0-10	0.1	0.1	350
090.006 ETO1	6-16	0.1	0.1	350
090.009 ETO1	9-16	0.1	0.1	350
090.010 ETO1	10-20	0.1	0.1	350
090.011 ETO1	11-18	0.1	0.1	350
090.015 ETO1	15-22	0.1	0.1	350
090.020 ETO1	20-30	0.1	0.1	350
090.030 ETO1	30-40	0.1	0.1	350
090.035 ETO1	35-45	0.1	0.1	350
090.040 ETO1	40-50	0.1	0.1	350
090.045 ETO1	45-55	0.1	0.1	350
090.050 ETO1	50-60	0.1	0.1	350



Ref	Range % Vol	Div % Vol	Accuracy	mm
090.060 ETO1	60-70	0.1	0.1	350
090.070 ETO1	70-80	0.1	0.1	350
090.080 ETO1	80-90	0.1	0.1	350
090.090 ETO1	90-100	0.1	0.1	350
090.095 ETO1	95-103	0.1	0.1	350

Multi-Lab Romania  
Tel.+4 021 312 7144  
Fax.+4 021 323 3331  
[www.multilab.ro](http://www.multilab.ro) | [www.labshop.ro](http://www.labshop.ro)



**LNE**  
LABORATOIRES DE PARIS  
2, rue Claude Berthelot - 75013 Paris Cedex 13  
Tél. : 01 40 43 37 81 - Fax : 01 40 43 37 37  
Commande : N° AC09798 du 30/03/2007

**CONSTAT DE VERIFICATION**  
N° H331687 / V 14 2

**ALLA FRANCE**  
Z.I. du Bompas  
48100 CHEMELLE

**DESCRIPTION DE L'INSTRUMENT**  
Thermomètre à dilatation de mercure  
ALLA FRANCE  
Echelle 0°C / 35°C en 0,1°C  
0,1° en 0,1%

**CONDITIONS DE VERIFICATION**  
Norme de base de référence :  
Cibrot N° 24-988 du 19 octobre 1984  
Procédure interne de vérification :  
SAS T 05.48 et Doc. COFRAC LAB-GTA 08  
Conditions d'environnement :  
Température ambiante : de 15 °C à 25 °C  
Humidité Relative : de 30 % à 65 %  
Date de la vérification : du 21/03/2007  
au 23/03/2007  
Date d'émission du constat : 04/04/2007

Il a été constaté que les caractéristiques de l'instrument (C) approuvées de l'accreditation d'Etat (EMT) diffèrent dans le tableau suivant :

Paramètre	(C)	U	EMT	Constat
Echelle	0 °C à 35 °C	0 °C à 35 °C	Non conforme	Non conforme

Ce document comprend 1 page

Le Responsable de l'Unité Technique  
Dimitrie JOUIN

